



Ashley Walk

£875,000

Situated in a highly desirable tree-lined location facing Hendon Golf Club is this wonderfully maintained 4 bedroom 3 bathroom family home, benefitting from a very large separate garage which can be accessed via the garden or adjacent road.

The ground floor boasts a spacious through lounge, leading onto an additional reception area, utility area, kitchen and shower room. The first floor boasts 3 bedrooms and a family bathroom. The second floor consists of a further bedroom and family bathroom.

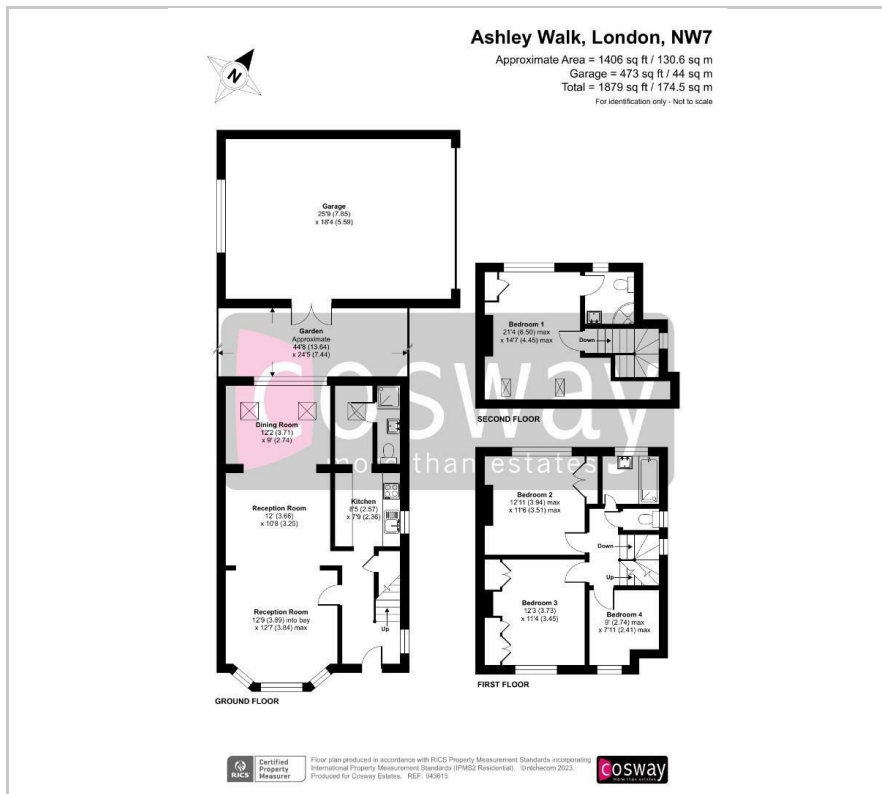
Further benefits include a circa 500 sq ft garage which can be converted to an office, gym, annex stpp. Walking distance to Mill Hill East Station, Waitrose and Virgin active and close to excellent local schools. Sole Agent.

Viewing

Please contact our Mill Hill Office on 020 8959 0011 if you wish to arrange a viewing appointment for this property or require further information.



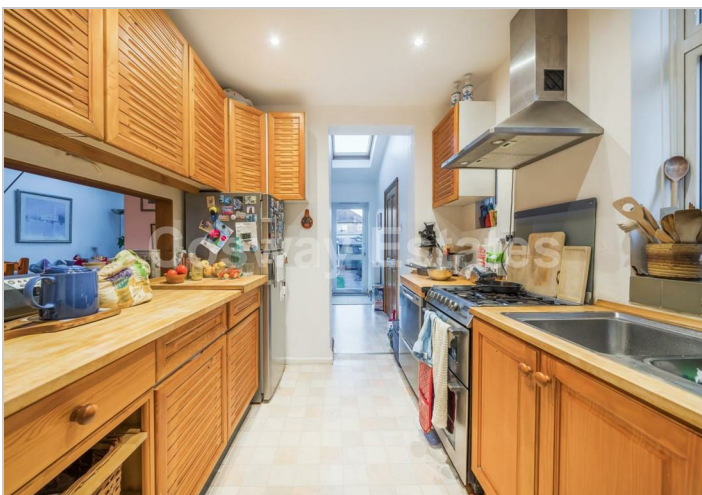
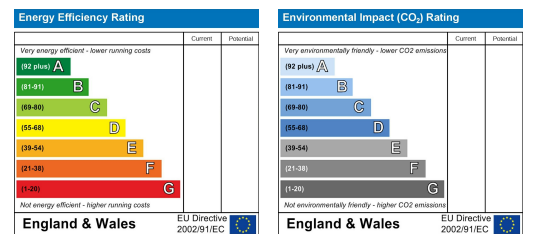
Floor Plan



Area Map



Energy Efficiency Graph



These particulars, whilst believed to be accurate are set out as a general outline only for guidance and do not constitute any part of an offer or contract. Intending purchasers should not rely on them as statements of representation of fact, but must satisfy themselves by inspection or otherwise as to their accuracy. No person in this firm's employment has the authority to make or give any representation or warranty in respect of the property.